

CONSTRUCTION & INDUSTRIAL

TIRES, RIMS AND WHEELS TO KEEP YOUR
BUSINESS ROLLING





CONTENT

LOADERS & DUMP TRUCKS

TECHKING	5
TRIANGLE	13
GALAXY	21
ALLIANCE	24

MOBILE CRANES

TECHKING	29
TRIANGLE	31

MATERIAL HANDLING

GALAXY	33
ALLIANCE	35

CONSTRUCTION & INDUSTRIAL

ALLIANCE	37
----------	----

OTR RIMS	39
-----------------	----

OFF THE ROAD & TREAD DEPTH	40
---------------------------------------	----

TIRE MARKING	41
---------------------	----

APPLICATION	42
--------------------	----

LOAD INDEX & SPEED INDEX	43
-------------------------------------	----



LOADERS & DUMP TRUCKS

This type of machinery typically operate in rough territory while moving heavy loads. This require tires that support excellent stability and robustness in operation. We offer a range of brands, sizes and treads specifically developed to resist cuts, ensure proper traction and carry heavy loads while operating under demanding conditions.

LOADERS & DUMP TRUCKS



MATE E3-L3 /

- 7% deeper than normal design (20.5R25 and 23.5R25 only)
- Specific pattern design for loader application
- Special tread formula



SIZE	TRA CODE	STAR RATING	RIM WIDTH & FLANGE	TREAD DEPTH (MM)	TIRE INFLATED DIM SECTION WIDTH MM (SW)	TIRE INFLATED DIM OVERALL DIAMETER MM (OD)	LOAD INDEX/ SPEED SYMBOL	VOL.	TYPE
15.5R25	G-3/L-3	**	12.00-1.3	26	385	1270	161 A8/176 A2	0.62	TL
20.5R25	E-3/L-3	**	17.0-2.0	32	520	1490	177 B/193 A2	1.15	TL
23.5R25	E-3/L-3	**	19.5-2.5	35	595	1615	185 B/201 A2	1.55	TL
26.5R25	E-3/L-3	**	22.0-3.0	36	675	1750	193 B/209 A2	2.07	TL

LOADERS & DUMP TRUCKS



MATE L3 /

- Block pattern design
- Special tread formula



SIZE	TRA CODE	STAR RATING	RIM WIDTH & FLANGE	TREAD DEPTH [MM]	TIRE INFLATED DIM SECTION WIDTH MM [SW]	TIRE INFLATED DIM OVERALL DIAMETER MM [OD]	LOAD INDEX/ SPEED SYMBOL	VOL.	TYPE
175R25	G-3/L-3	**	14.00-1.5	26	445	1350	162 A8/182 A2		TL

LOADERS & DUMP TRUCKS



PROADT /

- Big block design for bigger contact area from top to the bottom after wearing arc groove design for preventing groove crack
- Anti-crack sidewall compound for higher aging resistance performance and less sidewall crack



SIZE	TRA CODE	STAR RATING	RIM WIDTH & FLANGE	TREAD DEPTH (MM)	TIRE INFLATED DIM SECTION WIDTH MM [SW]	TIRE INFLATED DIM OVERALL DIAMETER MM [OD]	LOAD INDEX/ SPEED SYMBOL	VOL.	TYPE
23.5R25	E-3/L-3	**	19.5-2.5	36.5	597	1617	201 A2		TL
26.5R25	E-3/L-3	**	22.00-3.0	42	678	1740	209 A2		TL
29.5R25	E-3/L-3	**	25.00-3.5	43	749	1873	216 A2		TL

LOADERS & DUMP TRUCKS



ETADT /

- Vertical & horizontal groove design
- Strengthen steel belts design & 7 safety coefficient casing ply design
- Bigger footprint design for better wearing resistance performance



Dumper



Wheel
Loader

SIZE	TRA CODE	STAR RATING	RIM WIDTH & FLANGE	TREAD DEPTH [MM]	TIRE INFLATED DIM SECTION WIDTH MM [SW]	TIRE INFLATED DIM OVERALL DIAMETER MM [OD]	LOAD INDEX/ SPEED SYMBOL	VOL.	TYPE
23.5R25	E-4	**	19.5-2.5	47	597	1673	185 B	1.67	TL
26.5R25	E-4	**	22.00-3.0	50.5	673	1798	193 B	2.18	TL
29.5R25	E-4	**	25.00-3.0	55.5	749	1921	200 B		TL
600/65R25	E-3/L-3	**	19.5-2.5	34.5	606	1415	178 B/187 A2	1.21	TL
650/65R25	E-3/L-3	**	19.5-2.5	37	640	1480	180 B/193 A2	1.40	TL
750/65R25	E-3/L-3	**	24.00-3.00	43	738	1599	190 B/202 A2	1.89	TL
875/65R29	E-3/L-3	**	28.00-3.5	51	883	1881	203 B/ 214 A2	3.12	TL

LOADERS & DUMP TRUCKS

MATE D2S /



- High strength structural design
- Block bridge design



SIZE	TRA CODE	STAR RATING	RIM WIDTH & FLANGE	TREAD DEPTH [MM]	TIRE INFLATED DIM SECTION WIDTH MM [SW]	TIRE INFLATED DIM OVERALL DIAMETER MM [OD]	LOAD INDEX/ SPEED SYMBOL	VOL.	TYPE
20.5R25	L-5	**	1700-2.0	69	530	1527	193 A2	1.24	TL
23.5R25	L-5	**	19.5-2.5	71	595	1675	201 A2	1.67	TL
26.5R25	L-5	**	22.00-3.0	80	675	1800	209 A2	2.19	TL
29.5R25	L-5	**	25.00-3.5	89	750	1920	216 A2		TL

LOADERS & DUMP TRUCKS



ETDL5S /

- Reinforced steel belt Inside design
- Strengthen block bridge design
- 2 Ply carcass design



SIZE	TRA CODE	STAR RATING	RIM WIDTH & FLANGE	TREAD DEPTH (MM)	TIRE INFLATED DIM SECTION WIDTH MM [SW]	TIRE INFLATED DIM OVERALL DIAMETER MM [OD]	LOAD INDEX/ SPEED SYMBOL	VOL.	TYPE
20.5R25	L-5	**	1700-2.0	76	521	1548	193 A2	1.25	TL
23.5R25	L-5	**	19.5-2.5	84.5	597	1673	201 A2	1.67	TL
26.5R25	L-5	**	22.00-3.0	93.5	673	1798	209 A2	2.18	TL
29.5R25	L-5	**	25.00-3.5	101	749	1921	216 A2	2.76	TL

LOADERS & DUMP TRUCKS



ETSNOW WINTER /

- All-season compound especially fit for ice and snow road condition
- Centipede tread design for better grip capacity



SIZE	TRA CODE	STAR RATING	RIM WIDTH & FLANGE	TREAD DEPTH [MM]	TIRE INFLATED DIM SECTION WIDTH MM [SW]	TIRE INFLATED DIM OVERALL DIAMETER MM [OD]	LOAD INDEX/ SPEED SYMBOL	VOL.	TYPE
15.5R25	E-2/L-2	**	12.00-13	24	394	1277	160 B/176 A2		TL
445/95R25 [16.00]	E-2/L-2	***	11.25-2.0	26.5	432	1493	170 B		TL
26.5R25	E-2/L-2	**	22.00-3.0	35.5	673	1750	193 B/209 A2		TL
29.5R25	E-2/L-2	**	25.00-3.5	42	749	1873	200 B/216 A2		TL

LOADERS & DUMP TRUCKS



SNOWKING WINTER /

- All-Season design with new SNOWBEAR compound
- Deeper sipe design
- 3D sipe design



SIZE	TRA CODE	STAR RATING	RIM WIDTH & FLANGE	TREAD DEPTH [MM]	TIRE INFLATED DIM SECTION WIDTH MM [SW]	TIRE INFLATED DIM OVERALL DIAMETER MM [OD]	LOAD INDEX/ SPEED SYMBOL	VOL.	TYPE
175R25	E-2/L-2	**	14.00-1.5	28	464	1345	167 B/182 A2	0.84	TL
20.5R25	E-2/L-2	**	17.00-2.0	31	529	1492	177 B/193 A2	1.18	TL
23.5R25	E-2/L-2	**	19.5-2.5	34	614	1597	185 B/201 A2	1.57	TL

LOADERS & DUMP TRUCKS



TB516 /

- Wide aggressive tread design for excellent handling, outstanding traction and lateral adhesion
- Tough casing construction for enhanced impact and cut resistance support



SIZE	TRA CODE	STAR RATING	RIM WIDTH & FLANGE	TREAD DEPTH [MM]	TIRE INFLATED DIM SECTION WIDTH MM [SW]	TIRE INFLATED DIM OVERALL DIAMETER MM [OD]	LOAD INDEX/ SPEED SYMBOL	VOL.	TYPE
17.5R25	E-3	**	14.00/1.5	27	445	1348	127 B		TL/T2
20.5R25	E-3	**	17.00/2.0	30	521	1493	177 B		TL/T2
23.5R25	E-3	**	19.00/2.5	32	597	1617	185 B		TL/T2
26.5R25	E-3	**	22.00/3.0	35	673	1750	193 B		TL/T2
29.5R25	E-3	**	25.00/3.5	38	749	1874	200 B		TL/T2

LOADERS & DUMP TRUCKS



TB598 /

- Aggressive self-cleaning tread pattern for excellent traction, flotation and long tread life
- Rugged shoulder design for enhanced sidewall protection
- Tough casing construction for enhanced impact and penetration resistance



Articulated
Dump Truck



Wheel
Loader

SIZE	TRA CODE	STAR RATING	RIM WIDTH & FLANGE	TREAD DEPTH [MM]	TIRE INFLATED DIM SECTION WIDTH MM [SW]	TIRE INFLATED DIM OVERALL DIAMETER MM [OD]	LOAD INDEX/ SPEED SYMBOL	VOL.	TYPE
600/65R25	L-3	**	1700/2.0	34	606	1415	195 A2		TL
650/65R25	E-3/L-3	**	19.50/2.5	38	645	1481	200 A2		TL
750/65R25	E-3/L-3	**	24.00/3.0	42	754	1611	190 B		TL
775/65R29	E-3/L-3	**	24.00/3.5	44	771	1745	197 B		TL
875/65R29	E-3/L-3	**	27.00/3.0	50	868	1868	114 B		TL

LOADERS & DUMP TRUCKS



TB598S /

- Aggressive self-cleaning tread pattern for excellent traction, flotation and long tread life
- Unique compound for long tread life and efficient fuel economy
- Tough casing construction for enhanced impact and penetration resistance



Dumper

SIZE	TRA CODE	STAR RATING	RIM WIDTH & FLANGE	TREAD DEPTH [MM]	TIRE INFLATED DIM SECTION WIDTH MM [SW]	TIRE INFLATED DIM OVERALL DIAMETER MM [OD]	LOAD INDEX/ SPEED SYMBOL	VOL.	TYPE
23.5R25	E-4	**	19.5/2.5	47	597	1673	185 B		TL/T2
26.5R25	E-4	**	22.00/3.0	54	673	1798	193 B		TL/T2
29.5R25	E-4	**	25.00/3.5	57	856	1921	200 B		TL/T2
33.25R29	E-4	**	27.00/3.5	64	845	2143	209 B		TL/T2

LOADERS & DUMP TRUCKS



TB526S /

- Deep lug pattern provides even pressure distribution, increases mobility and optimizes traction
- Buttressed shoulder lugs offer enhanced resistance to sidewall cutting and also improved self-cleaning
- Rugged tread design and unique compound for long even wear



SIZE	TRA CODE	STAR RATING	RIM WIDTH & FLANGE	TREAD DEPTH [MM]	TIRE INFLATED DIM SECTION WIDTH MM [SW]	TIRE INFLATED DIM OVERALL DIAMETER MM [OD]	LOAD INDEX/ SPEED SYMBOL	VOL.	TYPE
21.00R33	E-4	**	15.00/3.0	52	572	2001	200 B		TL

LOADERS & DUMP TRUCKS



TB566S /

- Unbroken tread in the center with deep grooves for reduced vibration and enhanced stability
- Reinforced shoulder design offers large contact on the ground for outstanding stability
- Strong sidewall for extra protection against abrasions and damages



SIZE	TRA CODE	STAR RATING	RIM WIDTH & FLANGE	TREAD DEPTH [MM]	TIRE INFLATED DIM SECTION WIDTH MM [SW]	TIRE INFLATED DIM OVERALL DIAMETER MM [OD]	LOAD INDEX/ SPEED SYMBOL	VOL.	TYPE
18.00R33	E-4	**	13.00/2.5	66.8	53	1877	191 B		TL 191B

LOADERS & DUMP TRUCKS



TL538S+ /

- Aggressive open tread pattern for excellent grip and powerful traction
- Uniform groove depth for outstanding traction throughout the life of the tire
- Rugged shoulder design for enhanced stability and improved sidewall protection



SIZE	TRA CODE	STAR RATING	RIM WIDTH & FLANGE	TREAD DEPTH [MM]	TIRE INFLATED DIM SECTION WIDTH MM [SW]	TIRE INFLATED DIM OVERALL DIAMETER MM [OD]	LOAD INDEX/ SPEED SYMBOL	VOL.	TYPE
20.5R25	L-5	**	17.00/2.0	70	521	1548	193 A2		TL/T1
23.5R25	L-5	**	19.5/2.5	77	597	1673	201 A2		TL/T1
26.5R25	L-5	**	22.00/3.0	86	673	1798	209 A2		TL/T1
29.5R25	L-5	**	25.00/3.5	94	749	1921	216 A2		TL/T1

LOADERS & DUMP TRUCKS



TL559S+ /

- Extra deep tread for long tread life and enhanced traction and flotation
- Massive buttressed shoulders for enhanced resistance to damage
- Unique compound and heavy duty casing for extra protection



SIZE	TRA CODE	STAR RATING	RIM WIDTH & FLANGE	TREAD DEPTH (MM)	TIRE INFLATED DIM SECTION WIDTH MM (SW)	TIRE INFLATED DIM OVERALL DIAMETER MM (OD)	LOAD INDEX/ SPEED SYMBOL	VOL.	TYPE
20.5R25	L-5	**	1700/2.0	74	521	1548	193 A2		TL/T1
23.5R25	L-5	**	19.5/2.5	82	597	1673	201 A2		TL/T1
25.5R25	L-5	**	22.00/3.0	90	673	1798	209 A2		TL/T1
29.5R25	L-5	**	25.00/3.5	99	749	1921	216 A2		TL/T1

LOADERS & DUMP TRUCKS



TB596 WINTER /

- Aggressive lug design with intensive sipes offers maximum handling in snow and ice conditions
- Wide non-directional tread pattern for all-season use
- Unique compound to improve treadwear



SIZE	TRA CODE	STAR RATING	RIM WIDTH & FLANGE	TREAD DEPTH [MM]	TIRE INFLATED DIM SECTION WIDTH MM [SW]	TIRE INFLATED DIM OVERALL DIAMETER MM [OD]	LOAD INDEX/ SPEED SYMBOL	VOL.	TYPE
17.5R25	L-2	**	14.00/1.5	28	445	1348	182 A2		TL/T5
20.5R25	L-2	**	17.00/2.0	31	521	1493	193 A2		TL/T5
23.5R25	L-2	**	19.5/2.5	34	597	1617	201 A2		TL/T5

LOADERS & DUMP TRUCKS



LDSR 300 /

- Specially constructed for wheel loaders operating in the toughest environments. Transportation of heavy load demands excellent stability and robustness
- Sturdy radial construction coupled with strong sidewall protector provides superior strength and endurance to withstand challenging terrains



Wheel
Loader

SIZE	TRA CODE	STAR RATING	RIM WIDTH & FLANGE	TREAD DEPTH [MM]	TIRE INFLATED DIM SECTION WIDTH MM [SW]	TIRE INFLATED DIM OVERALL DIAMETER MM [OD]	LOAD INDEX/ SPEED SYMBOL	VOL.	TYPE
175R25	E-3/L-3	**	14.00-15	28	445	1350	167 B/182 A2		TL
20.5R25	E-3/L-3	**	17.00-2.0	32	536	1493	177 B/193 A2		TL
23.5R25	E-3/L-3	**	19.5-2.5	35	606	1615	185 B/201 A2		TL
26.5R25	E-3/L-3	**	22.00-3.0	38,5	678	1735	193 B/209 A2		TL
29.5R25	E-3/L-3	**	25.00-3.5	42	756	1862	200 B/216 A2		TL

LOADERS & DUMP TRUCKS



HTSR 400 /

- Specially built for dump trucks that face extreme environments while hauling heavy loads
- High tread depth ensures consistent traction and greater cut resistance making it the more productive choice
- Superior cut & chip protection with optimized belt design provides excellent durability resulting in reduced downtime



SIZE	TRA CODE	STAR RATING	RIM WIDTH & FLANGE	TREAD DEPTH [MM]	TIRE INFLATED DIM SECTION WIDTH MM [SW]	TIRE INFLATED DIM OVERALL DIAMETER MM [OD]	LOAD INDEX/ SPEED SYMBOL	VOL.	TYPE
23.5R25	E-4/L-4	**	19.5-2.5	51	608	1635	185 B/201 A2		TL
26.5R25	E-4/L-4	**	22.00-3.0	-	674	1750	193 B/209 A2		TL
29.5R25	E-5/L-4	**	22.00-3.5	57	76	1890	200 B/216 A2		TL

LOADERS & DUMP TRUCKS



DIG MASTER /

- Strong carcass construction that provides puncture resistance and good stable performance
- Wide spaced lugs provide high traction in all terrains and highly efficient self-cleaning



Excavator

SIZE	TRA CODE	STAR RATING	RIM WIDTH & FLANGE	TREAD DEPTH [MM]	TIRE INFLATED DIM SECTION WIDTH MM [SW]	TIRE INFLATED DIM OVERALL DIAMETER MM [OD]	LOAD INDEX/ SPEED SYMBOL	VOL.	TYPE
8.25-20/14	E-2		6.5	-	236	992	122 B		TT
9.00-20/14	E-2		7	-	259	1038	140 B		TT
10.00-20/16	E-2		7.5	-	275	1070	148 B		TT
11.00-20/16	E-2		8	-	293	1104	149 B		TT

LOADERS & DUMP TRUCKS



372 AGRIFLEX+ VF (very improved flexion) /

- Increased sidewall flexibility enables the tire to carry (up to 40%) more at the same pressure as compared to a standard tractor radial
- It offers a significantly large footprint leading to low soil compaction and a comfortable ride for the driver



SIZE	TRA CODE	STAR RATING	RIM WIDTH & FLANGE	TREAD DEPTH [MM]	TIRE INFLATED DIM SECTION WIDTH MM [SW]	TIRE INFLATED DIM OVERALL DIAMETER MM [OD]	LOAD INDEX/ SPEED SYMBOL	VOL.	TYPE
VF 620/70R26	R-1		DW21B/20B	46	626	1485	170D -		TL
VF 750/65R26	R-1		DW25B/27B	56	754	1636	177B		TL

LOADERS & DUMP TRUCKS



307 /

- Pattern developed for Grader-Loader applications
- The design provides optimal traction and cut resistance and also enables the tire to have excellent self-cleaning characteristics and long life



SIZE	TRA CODE	STAR RATING	RIM WIDTH & FLANGE	TREAD DEPTH [MM]	TIRE INFLATED DIM SECTION WIDTH MM [SW]	TIRE INFLATED DIM OVERALL DIAMETER MM [OD]	LOAD INDEX/ SPEED SYMBOL	VOL.	TYPE
13.00-24/12	L-2/G-2		8.0 TG	25	330	1270	168 A2/143 A8		TL
14.00-24/12	L-2/G-2		8	25	607	1338	172 A2/147 A8		TL
15.5-25/12	L-2/G-2		12	25	390	1278	-		TL
17.5-25/16	L-2/G-2		14	25	440	1347	177 A2/150 A8		TL
20.5-25/16	L-2/G-2		17.00/2.5x25	25	518	1493	181 A2/156 A8		TL

LOADERS & DUMP TRUCKS



375 AGRI-STAR VF /

- Ideal for applications on combine harvesters
- Tread pattern and lugs are designed to enable a comfortable and smooth ride on hard surfaces, combined with high traction and excellent self cleaning abilities off-road



Dump Truck

SIZE	TRA CODE	STAR RATING	RIM WIDTH & FLANGE	TREAD DEPTH (MM)	TIRE INFLATED DIM SECTION WIDTH MM (SW)	TIRE INFLATED DIM OVERALL DIAMETER MM (OD)	LOAD INDEX/ SPEED SYMBOL	VOL.	TYPE
1000/50R25			36.0TH	52	1060	1650	172 A8/166 D		TL

LOADERS & DUMP TRUCKS



377 AGRIFLEX+ /

- Features an all new, multi-purpose design making it the optimal backhoe tire
- Designed to fulfil the needs of spreaders, sprayers, combine harvesters and grain carts
- Presence of a stubble guard compound ensures excellent durability, reduced downtime and maximum vehicle productivity



Dump Truck

SIZE	TRA CODE	STAR RATING	RIM WIDTH & FLANGE	TREAD DEPTH [MM]	TIRE INFLATED DIM SECTION WIDTH MM [SW]	TIRE INFLATED DIM OVERALL DIAMETER MM [OD]	LOAD INDEX/ SPEED SYMBOL	VOL.	TYPE
1000/50R25			36.0TH	52	1030	1645	184 D		TL



MOBILE CRANES

Tires mounted on mobile cranes are subject to many requirements due to their versatile operating conditions. They must be able to perform on all types of surfaces from muddy to stony. At the same time, the tires must be reliable for use on highways, which require high-speed ability, low noise and long haul performance.

MOBILE CRANES



ETCRANE /

- Good high speed ability
- Low noise by variable pitch sequence design and low heat generation by cooling groove design
- Closed shoulder design prevent irregular wear on tread and ensure longer mileage



SIZE	TRA CODE	STAR RATING	RIM WIDTH & FLANGE	TREAD DEPTH [MM]	TIRE INFLATED DIM SECTION WIDTH MM [SW]	TIRE INFLATED DIM OVERALL DIAMETER MM [OD]	LOAD INDEX/ SPEED SYMBOL	VOL.	TYPE
385/95R25 [14.00]	E-2	***	10.00-15	22	380	1358	170 F	0.70	TL
445/95R25 [16.00]	E-2	***	11.25-2.0	25	445	1476	174 F	0.97	TL

MOBILE CRANES



SNOWKING L /

- Better high speed and long haul performance
- Updated internal structure and special tread compound excellent wearing and slipping resistance performance
- 3D sipe tread design reduce uneven wearing effectively



High Speed
Mobile Crane

SIZE	TRA CODE	STAR RATING	RIM WIDTH & FLANGE	TREAD DEPTH [MM]	TIRE INFLATED DIM SECTION WIDTH MM [SW]	TIRE INFLATED DIM OVERALL DIAMETER MM [OD]	LOAD INDEX/ SPEED SYMBOL	VOL.	TYPE
14.00R25	E-2	***	10.00-1.5	23	385	1365	170 E	0.72	TL

MOBILE CRANES

TB576 - TB586 /



- Straight rib design ensures good comfort for high speed application
- Longitudinal shoulder design provides good traction and ensure even wear
- Reinforced ribs connecting with circumferential blocks ensure the overall performance on highway



High Speed
Mobile Crane

SIZE	TRA CODE	STAR RATING	RIM WIDTH & FLANGE	TREAD DEPTH (MM)	TIRE INFLATED DIM SECTION WIDTH MM [SW]	TIRE INFLATED DIM OVERALL DIAMETER MM [OD]	LOAD INDEX/ SPEED SYMBOL	VOL.	TYPE
385/95R25 [14.00] TB576	E-2	***	10.00/1.5	22	379	1369	170 F		TL
445/95R25 [16.00] TB586	E-2	***	11.25/2.0	24	432	1493	174 F		TL



MATERIAL HANDLING

Material handling tires comes in many shapes depending on operation. In common is the fact that the tires must be able to transport heavy loads. Our range therefore includes solid and bias pneumatic tires, from smooth surfaces to the extra deep treads and various sizes.

MATERIAL HANDLING



PORT STAR PLUS /

- Extra deep tread which is highest in this segment
- Extra long life and longer wear
- Better performance and more value for money



Reach Stacker

SIZE	TRA CODE	STAR RATING	RIM WIDTH & FLANGE	TREAD DEPTH [MM]	TIRE INFLATED DIM SECTION WIDTH MM [SW]	TIRE INFLATED DIM OVERALL DIAMETER MM [OD]	LOAD INDEX/ SPEED SYMBOL	VOL.	TYPE
18.00-25/40	E-4		13		498	1673	Load Wheel		TL

MATERIAL HANDLING



HM450E /

- Exceptionall abrasion resistant rubber compound that minimizes heat generation for extended tread life
- The solid centre enhances wear characteristics. The wide, flat tread profile maximizes tread to surface contact for superior stability and wear
- The specially constructed casing resists separations between plies as well as between the tread and the casing under high stress



Reach Stacker

SIZE	TRA CODE	STAR RATING	RIM WIDTH & FLANGE	TREAD DEPTH [MM]	TIRE INFLATED DIM SECTION WIDTH MM [SW]	TIRE INFLATED DIM OVERALL DIAMETER MM [OD]	LOAD INDEX/ SPEED SYMBOL	VOL.	TYPE
18.00-33/40	E-4		13/2.5	-	516	1877	Load Wheel		TL

MATERIAL HANDLING



309 /

- Designed especially for heavy duty forklift trucks and container handlers operating on hard improved surfaces
- Unique tread design and special rubber compound provide long tread life
- Heavy duty nylon construction protects the sidewalls against damage and ensures long tire life



Container
Handler



Heavy Duty
Forklift

SIZE	TRA CODE	STAR RATING	RIM WIDTH & FLANGE	TREAD DEPTH [MM]	TIRE INFLATED DIM SECTION WIDTH MM [SW]	TIRE INFLATED DIM OVERALL DIAMETER MM [OD]	LOAD INDEX/ SPEED SYMBOL	VOL.	TYPE
16.00-25/32	E-3		20				203 A5		TL



CONSTRUCTION & INDUSTRIAL

These types of heavy-duty tires operate under the most demanding conditions and surfaces, which requires robustness high traction and self-cleaning ability. We offer a wide range of brands, sizes and treads to keep your operation run smoothly under demanding conditions.

CONSTRUCTION & INDUSTRIAL



302 /

- Heavy duty implement tire for industrial application and for all types of hard surfaces
- Good selfcleaning ability as well as high traction, which makes this tread design suitable for all kinds of off road services
- Strong nylon carcass ensures full power transmission as well as good resistance mechanical tire failures



Dozer



Wheel
Loader



Grader

SIZE	TRA CODE	STAR RATING	RIM WIDTH & FLANGE	TREAD DEPTH [MM]	TIRE INFLATED DIM SECTION WIDTH MM [SW]	TIRE INFLATED DIM OVERALL DIAMETER MM [OD]	LOAD INDEX/ SPEED SYMBOL	VOL.	TYPE
15.5-25/12	L-2/G-2		12	-	394	1277	168 A2/142 A8		TL

CONSTRUCTION & INDUSTRIAL



601 MUD & SNOW /

- The radial tire is developed for use on construction and agro-industrial equipments
- Construction with strong fabric layers protected by steel belts promises long tire life
- It's high crown radius provides flat contact area and enables even ground pressure distribution



SIZE	TRA CODE	STAR RATING	RIM WIDTH & FLANGE	TREAD DEPTH [MM]	TIRE INFLATED DIM SECTION WIDTH MM {SW}	TIRE INFLATED DIM OVERALL DIAMETER MM {OD}	LOAD INDEX/ SPEED SYMBOL	VOL.	TYPE
15.5/55R18	R-4		11	17	370	890	140 A8/140 B		TL

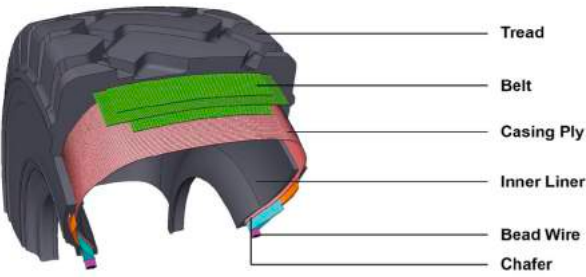
OTR RIMS

INCLUDING PORT, MOBILE CRANE,
INDUSTRIAL AS WELL AS FORKLIFT
RIMS

ART NUMBER	RIM SIZE		BRAND	TYPE
10"				
75471024em-0	10.00	X24	GKN	OTR Rim 1 part
75471024em-0	10.00	x24/2.0	GKN	OTR Rim 3 parts
14"				
75471425em-0	14.00	x25/1.3	GKN	OTR Rim 1 part
75471425em-1	14.00	x25/1,5	GKN	OTR Rim 3 parts
75471425em-2	14.00	x25/1,5	Cimac	OTR Rim 3 parts
17"				
75471725em-0	17.00	x25/1.7	GKN	OTR Rim 3 parts
75471725em-1	17.00	x25/1.7	Cimac	OTR Rim 3 parts
19.5"				
75471925em-0	19.50	x25/2.5	GKN	OTR Rim 5 parts
75471925em-1	19.50	x25/2.5	Cimac	OTR Rim 5 parts
22"				
75472225em-0	22.00	x25/3.0	GKN	OTR Rim 5 parts
25"				
75472525em-0	25.00	x25/3.5	GKN	OTR Rim 5 parts
75472525em-1	25.00	x25/3.5	Cimac	OTR Rim 5 parts
36"				
75473625em-0	36.00	x25/1.5	GKN	OTR Rim 3 parts
75473625em-0	36.00	x25/1.5	GKN	OTR Rim 3 parts
24"				
75472429em-0	24.00	x29/3.0	GKN	OTR Rim 3 parts
27"				
75472729em-0	27.00	x29/3.0	GKN	OTR Rim 3 parts
36"				
75473632em-0	36.00	x32/1.7	GKN	OTR Rim 3 parts

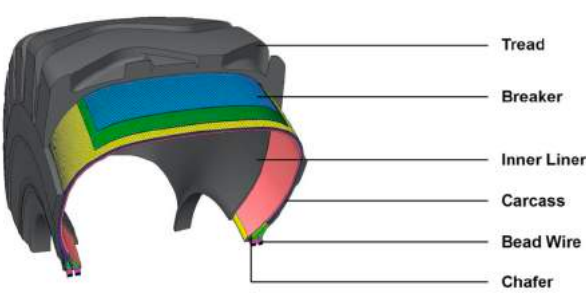
OFF-THE ROAD RADIAL TIRE

A radial tire has cords that run straight across to each bead, perpendicular to the tread face, rather than running at an angle. Further, there are additional plies that run at an angle within the tread face of the tire only, so a radial tire might only have two layers within the sidewall but five or more in the tread face.



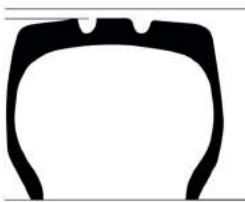
OFF-THE ROAD BIAS TIRE

With a bias-ply tire, the individual cords that make up each ply or layer within the carcass of the tire run at an angle across the body of the tire from one bead to another. Though the angle varies, for the purposes of illustration let's say they run at a 45-degree angle relative to the face of the tire.



DIFFERENT TREAD DEPTHS

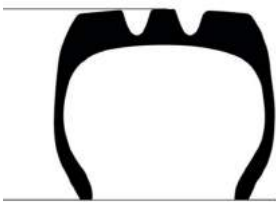
According to the classification of different tread depths, there are three series that can be chosen by thier use of condition.



Normal Tread
E2-E3-L2-L3-G2
100% design depth



Deep Tread
E4-L4-IND4
150% design depth



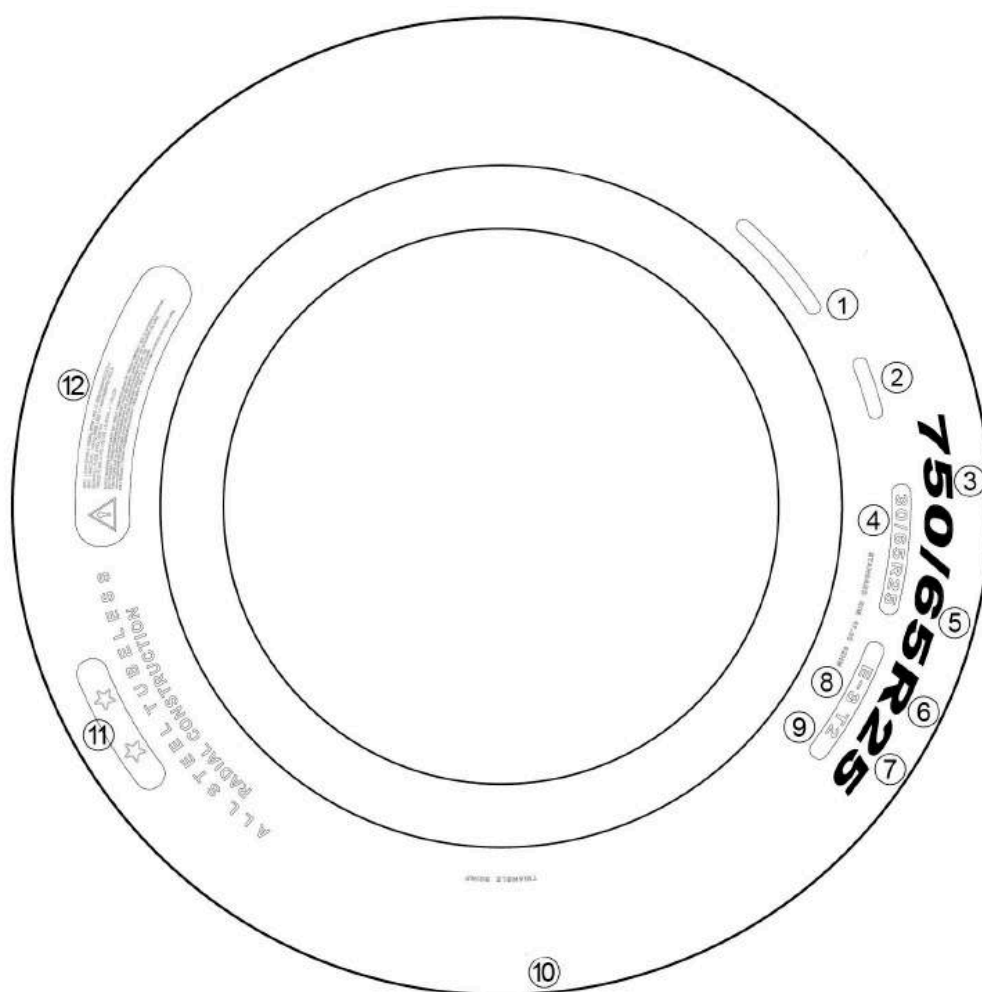
Extra Deep Tread
L5
250% design depth

DIFFERENT TYPES OF MACHINERY	
CODE	APPLICATION
C	Compactor
E	Transport
L	Loader & Bulldozer
G	Grader
IND	Industrial Vehicle

TREAD PATTERNS	
INDEX	PATTERN
1	Ribbed
2	Traction
3	Rock
4	Rock (deep tread)
5	Rock (very-deep tread)
7	Flotation
5	Smooth

TIRE MARKINGS

- ① Product code
- ② Tire number
- ③ Nominal section width of the tyre (in mm): 750
- ④ Nominal section width of the tyre (in inches): 30
- ⑤ Tire series: aspect ratio = 0.65
- ⑥ Radial structure: R
- ⑦ Rim diameter (in inches): 25
- ⑧ Industry code: E-3
- ⑨ Tire compound
- ⑩ Tread pattern
- ⑪ Load capability: **
- ⑫ Safety warning
- ⑬ Up/Bottom side: M/F



APPLICATION

CODE	TREAD PATTERN	APPLICATION
C1	Smooth	 Compactor
E2	Traction	  Dump Truck Dumper
E3	Rock	  Dump Truck Dumper
E4	Rock (deep tread)	  Dump Truck Dumper
E7	Flotation	  Dump Truck Dumper
L2	Traction	  Dozer Wheel Loader
L3	Rock	  Dozer Wheel Loader
L4	Rock (deep tread)	  Dozer Wheel Loader
L5	Rock (very-deep-tread)	  Dozer Wheel Loader
L4S	Smooth (deep tread)	  Dozer Wheel Loader
L5S	Smooth (very-deep-tread)	  Dozer Wheel Loader
G2	Traction	 Grader
IND3	Rock	  Rubber Tire Gantry Reach Stacker
IND4	Rock (deep tread)	  Rubber Tire Gantry Reach Stacker
IND5	Rock (very-deep-tread)	  Rubber Tire Gantry Reach Stacker

LOAD INDEX & SPEED INDEX

LOAD INDEX - SPEED INDEX														
LOAD INDEX (LI) AND MAXIMUM LOAD (KG/LB)														
The LOAD INDEX is a numerical code which indicates the maximum load a tire can carry at the speed corresponding to its speed symbol, under specified conditions														
LI	KG	LB	LI	KG	LB	LI	KG	LB	LI	KG	LB	LI	KG	LB
120	1400	3090	150	3350	7390	180	8000	17640	210	1900	41890	240	45000	99210
121	1450	3200	151	3450	7610	181	8250	18190	211	19500	43000	241	46250	101960
122	1500	3310	152	3550	7830	182	8500	18740	212	20000	44100	242	47500	104720
123	1550	3420	153	3650	8050	183	8750	19290	213	20600	45420	243	48750	107470
124	1600	3530	154	3750	8270	184	9000	19840	214	21200	46750	244	50000	110250
125	1650	3640	155	3875	8540	185	9250	20390	215	21800	48070	245	51500	113540
126	1700	3750	156	4000	8820	186	9500	20940	216	22400	49390	246	53000	117950
127	1750	3860	157	4125	9090	187	9750	21500	217	23000	50700	247	54500	120150
128	1800	3970	158	4250	9370	188	10000	22050	218	23600	52040	248	56000	123480
129	1850	4080	159	4375	9650	189	10300	22710	219	24300	53580	249	58000	127890
130	1900	4190	160	4500	9920	190	10600	23370	220	25000	55120	250	60000	132300
131	1950	4300	161	4625	10200	191	10900	24030	221	25750	56780	251	61500	135580
132	2000	4410	162	4750	10470	192	11200	24690	222	26500	58430	252	63000	138890
133	2060	4540	163	4875	10750	193	11500	25360	223	27250	60070	253	65000	143300
134	2120	4670	164	5000	11020	194	11800	26020	224	28000	61740	254	67000	147710
135	2180	4810	165	5150	11350	195	12150	26790	225	29000	63940	255	69000	152120
136	2240	4940	166	5300	11690	196	12500	27560	226	30000	66150	256	71000	156530
137	2300	5070	167	5450	12020	197	12850	28330	227	30750	67790	257	73000	160930
138	2360	5200	168	5600	12350	198	13200	29100	228	31500	69460	258	75000	165340
139	2430	5360	169	5800	12790	199	13600	29990	229	32500	71669	259	77500	170660
140	2500	5510	170	6000	13230	200	14000	30870	230	33500	73870	260	80000	176400
141	2575	5680	171	6150	13560	201	14500	31970	231	34500	76070	261	82500	181880
142	2650	5840	172	6300	13890	202	15000	33070	232	35500	78280	262	85000	187390
143	2725	6010	173	6500	14330	203	15500	34180	233	36500	80480	263	87500	192900
144	2800	6170	174	6700	14770	204	16000	35280	234	37500	82690	264	90000	198450
145	2900	6390	175	6900	15210	205	16500	36380	235	38750	85430	265	92500	203920
146	3000	6610	176	7100	15650	206	17000	37480	236	40000	88200	266	95000	209440
147	3075	6780	177	7300	16090	207	17500	38590	237	41250	90940	267	97500	214950
148	3150	6950	178	7500	16530	208	18000	39690	238	42500	93710	268	100000	220500
149	3250	7170	179	7750	17090	209	18500	4090	239	43750	96470	269	103000	227370

SPEED SYMBOLS										
The SPEED SYMBOL indicates the maximum speed at which the tire can carry a load corresponding to its load index, under specified condtions										
CODE	A1	A2	A6	A8	B	C	D	E	F	G
Speed (km/h)	5	10	30	40	50	60	65	70	80	90
Speed (mph)	3	5	20	25	30	35	40	45	50	55

WE KEEP OUR CUSTOMERS' BUSINESS ROLLING

With over 50 years in the business, NDI is an experienced and competent partner when it comes to solutions for tires, rims and wheels for all types of vehicles. With over 500.000 tires and rims on stock, manufacturing of customized agricultural rims along with over 600 dedicated employees, we are always ready to find the right solution for our customers.

FROM THE SMALLEST TO THE LARGEST

NDI keeps the tires rolling on all types of vehicles with a minimum of four wheels in the transportation industry as well as the agricultural and construction sector. Our solutions range from tires, rims and wheels for all types of vehicles ranging from forklifts to the largest industrial machinery.

CONTACT NDI CUSTOMER SERVICE TODAY

Contact NDI Customer Service today and learn more about our tire and rim solutions, and how we can help keep your business rolling:

Phone: +45 76 15 20 03

Mail: Kundeservice.agro@ndi-dk.com



Headquarter Brørup, Denmark

NDI GROUP A/S

Over the years, NDI Group has gained a solid foothold in the Nordics with several branches in Denmark, Norway, Sweden and Finland.

In 2020, the 100% family-owned company reached a major milestone, celebrating 50 years in the industry. Since 1970, NDI Group has built many valued partnerships. Among many with Yokohama Off-Highway Tires, who manufacture agriculture and construction tires under the brands Alliance and Galaxy.